

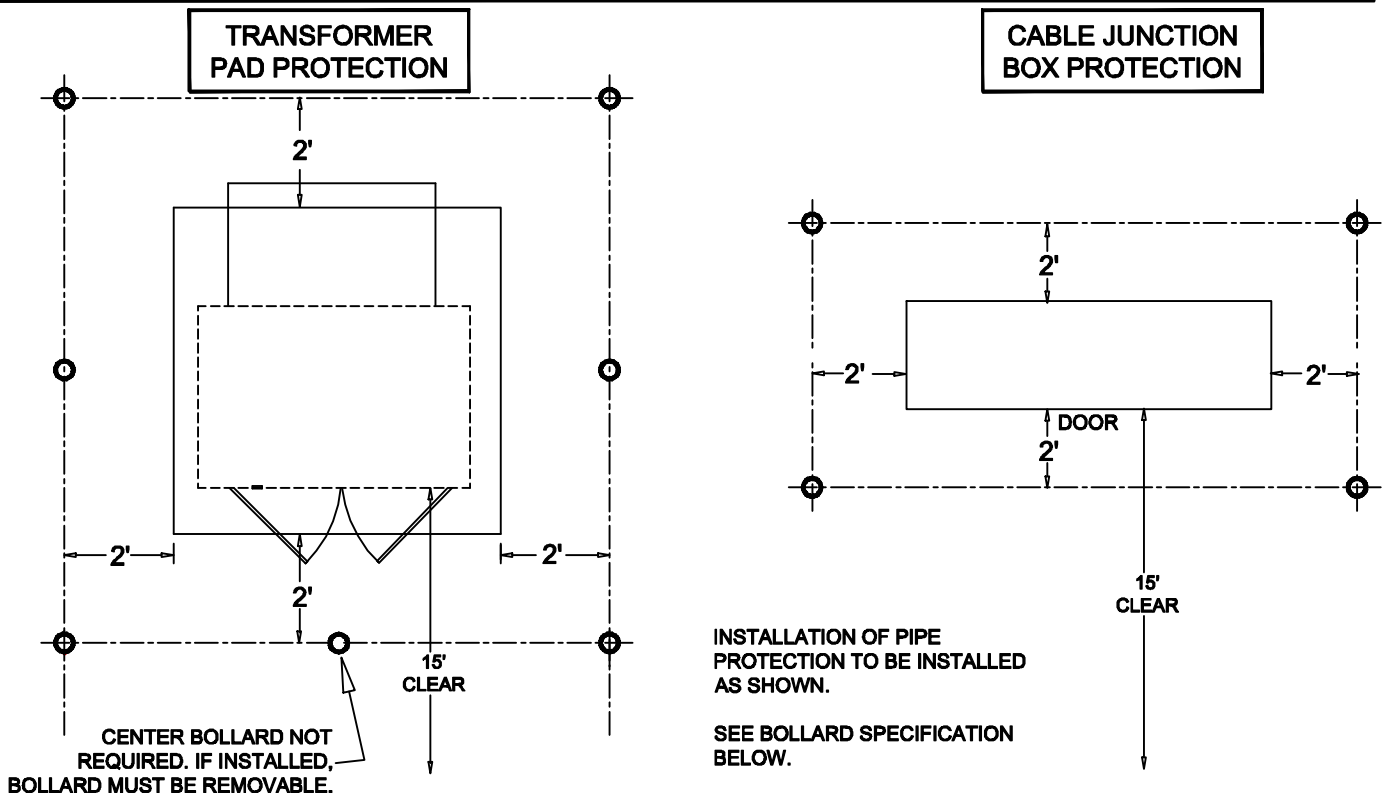
UNDERGROUND FACILITY BOLLARD REQUIREMENTS

CONCRETE FILLED PIPE PROTECTION FOR UNDERGROUND APPARATUS

THIS DRAWING COVERS THE GENERAL REQUIREMENTS FOR THE PROTECTION OF POLES AND DOWN GUYS.

THESE SHALL BE CONSIDERED TO BE THE MINIMUM REQUIRED PROTECTION. SITE SPECIFIC REQUIREMENTS MAY BE NECESSARY.

NOTE:
WHEN BOLLARDS ARE SPECIFIED BY COOPERATIVE FOR APPARATUS PROTECTION, BOLLARDS MUST BE INSTALLED BEFORE SERVICE IS ENERGIZED.



BOLLARD SPECIFICATION

4" X 7" EXTRA STRONG STEEL PIPE TO BE FILLED WITH CONCRETE AND ROUNDED OFF AT THE TOP TO SHED WATER.

