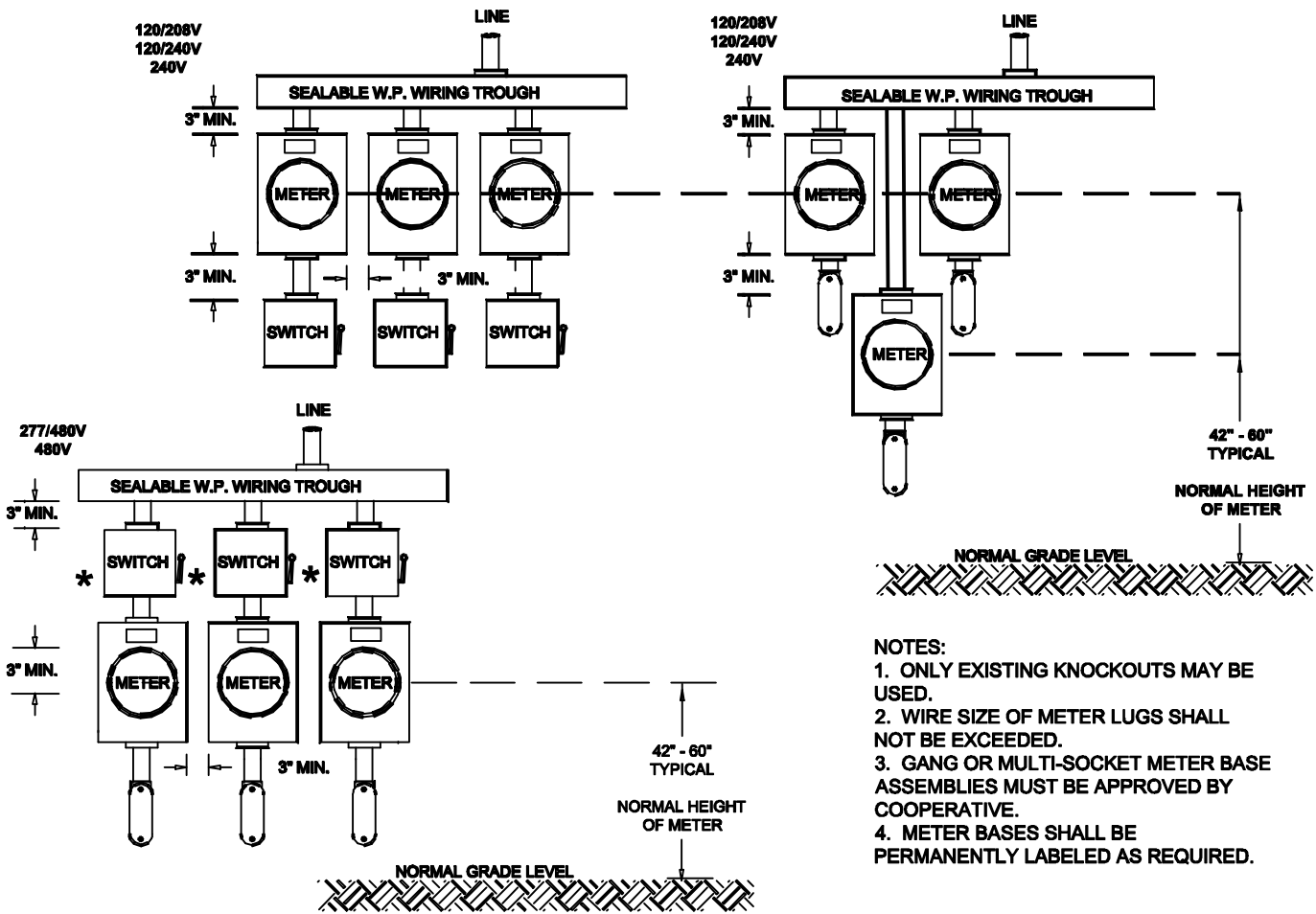
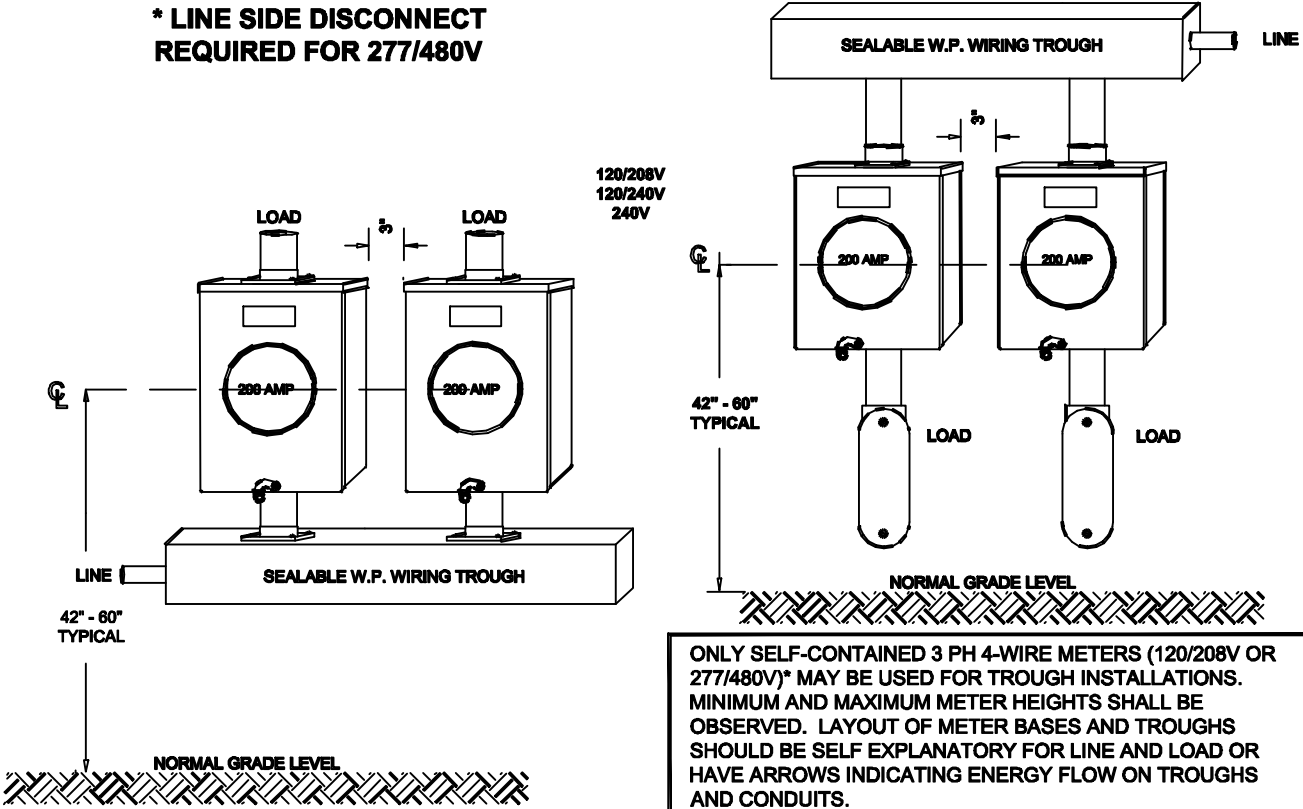


COMMERCIAL MULTI-METER INSTALLATION



- NOTES:
1. ONLY EXISTING KNOCKOUTS MAY BE USED.
 2. WIRE SIZE OF METER LUGS SHALL NOT BE EXCEEDED.
 3. GANG OR MULTI-SOCKET METER BASE ASSEMBLIES MUST BE APPROVED BY COOPERATIVE.
 4. METER BASES SHALL BE PERMANENTLY LABELED AS REQUIRED.

*** LINE SIDE DISCONNECT
REQUIRED FOR 277/480V**



ONLY SELF-CONTAINED 3 PH 4-WIRE METERS (120/208V OR 277/480V)* MAY BE USED FOR TROUGH INSTALLATIONS. MINIMUM AND MAXIMUM METER HEIGHTS SHALL BE OBSERVED. LAYOUT OF METER BASES AND TROUGH SHOULD BE SELF EXPLANATORY FOR LINE AND LOAD OR HAVE ARROWS INDICATING ENERGY FLOW ON TROUGH AND CONDUITS.